

AT740



Standard Line and Field Colors*



PROPERTY

DESCRIPTION

Primary/Stalk Yarn Type:	Polyethylene
Secondary/Thatch Yarn Type:	Nylon
Yarn Cross Section:	Polyethylene Slit Film with Texturized Nylon Thatch
Standard Color(s)*:	Field with Forest Thatch, White, Red, Florida Blue, Silver, Yellow, Black
UV Stabilized:	Yes
Fabric Construction:	Tufted
Primary Backing:	ArmorLoc™ 3L Stabilized Woven PP/PET Multilayer
Coating Type(s):	SilverBack™ Polyurethane or 5mm Polyurethane Foam with Fleece
Perforations:	Optional
Yarn Denier/Ends:	Stalk: 5000/1 Thatch: 4400/8
Pile Height:	3/4"
Face Weight:	40 oz/yd ²
Fabric Width:	15 ft.



APPLICATION

With an almost perfect 50/50 blend of nylon and polyethylene, AT740 provides all of the advantages you've come to expect from athletic turf, with exceptionally high wear and resistance performance. Designed to be used without rubber infill, AT740 is easier to maintain and up to 10% cooler than rubber-infilled turf. Create a portable system with the addition of 4" or 8" velcro.



*Custom colors available upon request

200 Howell Dr. Dalton GA 30721

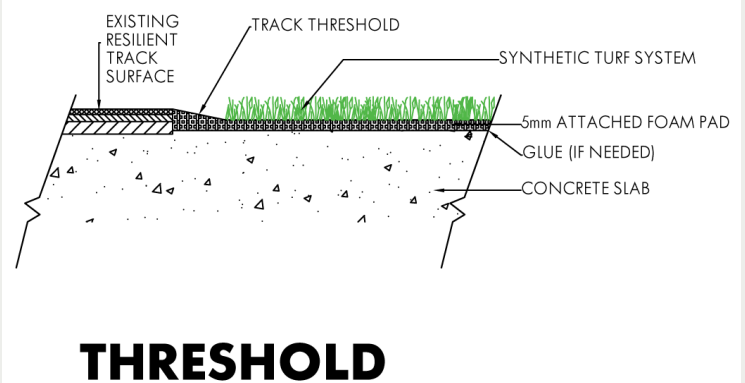
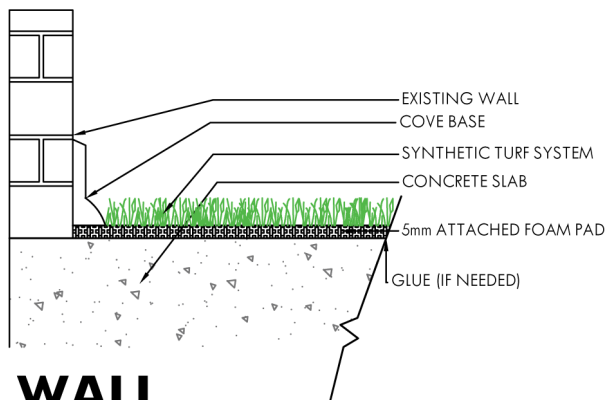
www.cpturf.com

800.564.4492



AT740

FINISHED FABRIC	ENGLISH SYSTEM		METRIC SYSTEM		ASTM TEST F-1551
Nominal Specification	Value	Units	Value	Units	Method
Pile Height (Nominal)	0.75	In.	19.05	mm.	D-5823
Face Weight	40	oz/yd ²	1,356	g/m ²	D-5828
Total Fabric Weight (SilverBack™)	67	oz/yd ²	2,272	g/m ²	D-5828
Total Fabric Weight (5mm Foam)	125	oz/yd ²	4,238	g/m ²	D-5828
Primary Backing Weight	7	oz/yd ²	237	g/m ²	D-5828
Secondary Coating Weight (SilverBack™)	20	lbs.	678	g/m ²	D-5828
Secondary Coating Weight (Foam)	78	oz/yd ²	2,645	g/m ²	D-5828
Tuft Bind	>8	lbs.	>3.6	Kg.	D-1335
Grab Tear Strength (Average)	>200	ppm	>91	ppm	D-2256
Lead Content	<50	Denier	<50	D-TEX	D-2766
Total Yarn Linear Density	9,400	lbs.	4,264	Kg.	D-1577
Tensile Strength	15	Per 3"	6.8	Per 10 cm	D-5034
Stitch Rate	13.5	In.	17.68	Cm.	D-5793
Machine Gauge	0.25	PASSED	0.95	PASSED	D-5793
Flammability	TEST	In./Hr.	TEST	Cm./Hr.	D-2859
Water Permeability with Infill, Perforated	>30	In./Hr.	>76	Cm./Hr.	F-1551
Fiber Thickness	–	–	100	microns	D-3218



It is the policy of Controlled Products to continuously improve their line of products. Therefore, Controlled Products reserves the right to change, modify or discontinue systems, specifications and accessories of all products at any time without notice or obligation to purchaser.